



SUMMER 2024
ASHEVILLE

CAMPER PREPARATION PACKET

**WHAT INFORMATION
WILL YOU RECEIVE?**

+ STUFF TO BRING

+ FAQs

+ CCC RULES

+ MEDICAL INFORMATION

+ GROUP DEVOTIONS

+ WEEK WALK-THROUGH

+ SUMMER THEME



WHAT TO BRING

REQUIRED

- Bible
- Community clothes : enough for five days (See dress suggestions.)
- HomeBase clothes : Enough for five days. This is clothing you will wear back at Christmount in the evenings. (See dress suggestions.)
- Work Clothes: It is wise to bring at least one outfit you don't mind ruining. We sometimes do painting and work projects with our partner ministries throughout the week as needed.
- Sweatshirt, light jacket. It can get cooler in the evenings in Asheville.
- Sneakers are a must! There will be long periods of walking some days. No open toed or open heeled shoes are allowed on certain days with long walks and specific activities. Following this rule will allow everyone to be flexible and ready for any and every serving or learning situation.
- Sandals or flip flops. These are definitely needed in camp at Christmount. If you don't want to wear your sneakers all the time. Sandals are sometimes appropriate in other settings.
- Toiletries: soap, wet wipes, washcloths, toothbrushes, deodorant, and other toiletries.
- Towels: For cleaning up, sitting on the ground outside, hiking and fountains
- Bedding: twin sized bed for cabins and group lodge. Linens are provided for hotel rooms.
- Water Bottle
- Backpack (easy to wear on your back during walks and hike)

WHAT TO BRING

RECOMMENDED

- Flashlight
- Swim Wear & T-shirt
- Sunscreen
- Some extra spending money: CCC merchandise for sale at reasonable prices.
- Insect repellent
- Insurance card
- Guitar or other instruments you might play
- Medicines (note, CCC staff do not administer medicines, but do have First Aid kits for minor needs.)
- Ear Plugs: If you're sensitive to people snoring.
- Devotional materials, music, journal
- Small fan
- Stationary: If you want to write to people back home.

FREQUENTLY ASKED QUESTIONS

IS A WEEK AT CCC GEARED MORE TOWARDS YOUTH?

A lot of our in-camp activities, yes, will be targeted towards youth, but we also believe that adults will learn and grow from the serving, learning, worship, sharing, and even games and fun songs.

AM I RESPONSIBLE FOR PLANNING EVENING ACTIVITIES?

Nope! Our camp staff will plan and lead all evening activities. At times, they may call on youth and adult volunteers to help out, and we will have small group time most evenings that we ask you to facilitate with your church. We provide you with the materials you need for those times.

I'M NERVOUS ABOUT BEING WITH YOUTH!

You will usually find that working with youth is easier than it sounds. Keep this word in mind: FACILITATE. Your job is not to have all the answers or to dictate what to do (although occasionally, you may have to). The best way to lead with youth is to facilitate, to help the youth in your group to show leadership and solve problems as a team. Our staff is there to help you in working with the youth. You are not alone!

I'M NERVOUS ABOUT BEING WITH PEOPLE EXPERIENCING HOUSING INSECURITY!

Our staff and ministry partners are also there to help guide you in being in relationship with people experiencing housing insecurity. Note, we said being in relationship WITH the community. We have as much to learn from the community as to give. The Haywood Street Congregation is our partner ministry for a reason: they are in service with one another every day. They value each person and have created a community and a church. We feel privileged to share in this faith community for the week. Remember that there are no silly questions or concerns. You don't need any special gifts or professional training beforehand: simply an open mind and heart to experience God this week. All emotions and feelings are valid. We invited you to come as you are and walk alongside us as we embrace relational ministry.

FREQUENTLY ASKED QUESTIONS

CAN I GIVE MONEY OR RIDES TO THE FRIENDS I MEET?

We understand that one's needs can be met in a variety of ways. Our focus during your week is to develop and foster relationships among people often marginalized by society. This being said, we will encourage youth to leave all valuables at the home base while serving in the community each day. There is not a need for students to have money while out serving in the community. We have found that money can inhibit ministering to something greater. If adults are led to provide something more for a new friend you meet, please talk with a CCC staff member, Haywood Street representative, or representative of a partnering organization. They work with the community year round and have formed relationships. We do not give car or van rides to people in the community, except during our pre-planned activities directed by the CCC staff in partnership with Haywood Street Congregation only.

WILL WE HAVE FREE TIME?

Yes, there will be some opportunities for free time. The staff will always try to plan for some unstructured free-time between evening activities, though some evenings may be more "packed" than others. Most free time will occur in camp, but we also have a few instances where small groups can venture out of camp for free time. There must be a minimum of 1 adult and 2 youth together in a group to leave camp at any time.

FREQUENTLY ASKED QUESTIONS

CAN WE SITE SEE IN ASHEVILLE, GO OUT TO EAT, RUN TO WALMART?

While we encourage groups to grab the occasional ice cream cone or snack at a local downtown business within walking distance (during free time only) please eat the meals provided in-camp. Also, please come as prepared as possible to avoid trips to the store.

WHAT ARE THE FACILITIES LIKE?

CCC will operate from Christmount in Black Mountain. We will call that HOMEBASE. There are 8 bunk beds per cabin split into two rooms with a shared bathroom. Bedding is not provided.

CAN I SHARE MY CELL PHONE NUMBER, EMAIL ADDRESS, MAILING ADDRESS, SOCIAL MEDIA INFO?

While we understand the purpose of this week is to build relationships, we ask that you take extreme caution when sharing personal information. We have found it best to wait up to a year or two years of knowing someone before sharing personal information. Students are not allowed to share personal contact information under any circumstances. Adults 25 years and older may share information with the understanding that conversations or responses from the community can not be controlled. We recommend sharing the church's mailing address and communicating as a group through letters with people you form close friendships with.

HOW ARE WE DIVIDED INTO WORK TEAMS?

Some days you may be divided into smaller teams, other days you may be working with the entire group. In any group, there will be at least 1-2 adults. If and when smaller work teams are formed, we will do so with the intention of mixing up ages and experience.

FREQUENTLY ASKED QUESTIONS

WILL STUDENTS BE SAFE?

Every place we go and every project scheduled will be overseen by our trained staff ahead of time and during the week. All groups will have at least one, if not multiple adult leaders. No youth will ever be out of sight of adults and staff members. There will be a “buddy system” in which each youth will be paired with another. We will make sure that participants are comfortable and confident.

WHAT WILL WE DO DURING THE WEEK?

The most important thing we will do is build relationships. This week is primarily about getting to know people and their stories. The staff may plan a variety of service projects to help campers build relationships — these could involve organizing clothing, gardening, preparing food, planning worship services, serving ice cream in the park, hiking, or playing games. This is not a complete list, only possibilities — the staff will plan the specifics, and they could vary week to week. Be open to many different ways of serving.

WILL WE BE DOING CONSTRUCTION OR PAINTING?

It’s possible that these needs may arise with partnering organizations. However, you don’t need any prior experience.

HOW DEMANDING IS THE PHYSICAL ASPECT?

The most demanding physical aspect is walking. Campers will often travel on-foot around the city. Therefore, some days (not every day) will involve long periods of walking on hilly terrain. In the past, people of many ages and physical abilities have managed just fine, but be aware walking is a BIG part of the week.

FREQUENTLY ASKED QUESTIONS

WHAT IS THE WEEK LIKE EMOTIONALLY?

Seeing material poverty up close is emotionally challenging. Processing these emotions back at homebase is one of the focuses of the week. Encourage your group to be open and ready to learn / ask questions to help process the experience.

WHO IS IN CHARGE OF CCC?

CCC is a non-profit organization that is led by a Board of Directors and a full-time administrative staff. During the summer, it is operated by a summer staff of fun, energetic, young adults who love God and love people! They are looking forward to leading you and serving alongside you!

WE ROLL WITH IT

We roll with it. In life, teens change, adapt, and grow every day. Camp should be no different. Every group of campers has different needs, and we pride ourselves on being flexible and adaptable based on what our campers tell us they need.

YOU HAVE A QUESTION THAT HASN'T BEEN ANSWERED?

We would be happy to speak with you!
Please contact the CCC office



704-721-0033



laura@carolinacrossconnection.org

CCC RULES

PHONES

Participants can bring their phones but should limit usage during camp activities, on the worksite, and in the vans on the way to and from camp. If phone usage becomes a problem our staff will ask the Group Leader, or another adult from the group, to keep the phone in a safe place so it doesn't distract from the camp community.

WEAPONS & OTHER DANGEROUS ITEMS

We do not permit blades (e.g. knives, pocket knives) firearms, paint guns, air rifles, air pistols, BB guns, replicas of firearms, fireworks, water balloons, or water guns in camp. Help us keep our camps as safe and non threatening as possible. Do not bring these dangerous items.

TOBACCO PRODUCTS

We strongly prefer that no tobacco products be brought or used during the camp week. Smoking/vaping is allowed only in a designated "smoking/vaping area" and is prohibited in all other areas of camp. Cigarette butts and spit cups should be disposed of properly. North Carolina law states that a person under the age of 21 cannot purchase tobacco products. Anyone under the age of 21 should also not be using these products. We expect full compliance with this law, and our logical extension of it: all individuals under the age of 21 are prohibited to use tobacco products at CCC.

CCC PROHIBITS ALL PARTICIPANTS USING TOBACCO PRODUCTS ON OUR WORKSITES, OR EN ROUTE TO AND FROM WORKSITES, INCLUDING PARTICIPANTS WHO ARE 21 & OLDER.

CCC RULES

ALCOHOL OR DRUGS

POSSESSION OR USE OF DRUGS OR ALCOHOL AT CCC IS STRICTLY PROHIBITED! ANYONE WHO VIOLATES THIS RULE WILL BE SENT HOME IMMEDIATELY!

SNACKS

Food in sleeping quarters may attract pests and insects. Any snack or food items brought must be stored properly.

NEGATIVE ATTITUDES

No closed-mindedness or attitudes unwilling to experience, grow, and change.

CAMP BOUNDARIES

Each camp location has boundaries that participants are expected to stay in during the week. Program directors explain these on Monday.

THE BUDDY SYSTEM

Participants (both adults and students) should always be in groups of three or with the group at all times when out in the community serving or at Haywood Street. ALWAYS! If ever in doubt as to where you are to be and with whom, ASK A STAFF MEMBER OR ADULT immediately. Wandering off will not be tolerated.

FREE TIME

Participants are allowed to explore Asheville during their free time. They must be in groups of three with an adult.

CCC RULES

GENDER-RELATED RULES

CCC also does not tolerate sexual harassment or abuse in any form. Offenders are sent home immediately and possibly reported to authorities based on the offense. Participants are separated by gender identity for designated sleeping areas. We are happy to accommodate any participant requiring extra privacy, etc. Please speak with our administrators before arriving at camp so we can make appropriate arrangements.

VIOLENCE

Participants are prohibited from threatening, fighting with, or intentionally harming others – physically, emotionally, or mentally. Intentionally harming oneself is prohibited.

PRANKS

CCC does not tolerate or encourage pranks from youth or adults. There are plenty of opportunities to build community and have fun in positive, healthy ways. Please be respectful of how pranks can disrupt a community and be a burden on our staff. The staff are working long hours and need to get as much rest as possible and not be concerned with pranks being played on them or others in camp. They are also juggling many responsibilities and need to focus on ensuring everything is taken care of – we appreciate you working WITH US and not against us!

LIGHTS OUT

All participants will go to bed between 10:30 and 11:30 in a time called “Lights Out,” no exceptions. You will be working long hours, and we want everyone to have energy to function safely during the day. Drivers especially need their rest. So, when the lights go out, EVERYONE must go to bed.

ASHEVILLE PROGRAM

CCC RULES

PERSONAL INFORMATION

Students are not allowed to share personal contact information under any circumstances. Adults 25 years and older may share information with the understanding that conversations or responses from the community can not be controlled. This includes phone numbers, email addresses, social media accounts, and mailing addresses. An alternative is to share the church's information to correspond through this method. Although this rule can be challenging, please understand we have all participant's best interest in mind.

VISITORS

We ask that visitation be limited, as it can interfere with the community that is formed. Unannounced visitors can also disrupt an evening's activities and the amount of food served at dinner. If someone from home wants to visit, you must inform the Program Director to seek their opinion and approval in advance. The Program Director has the final say about whether or not to allow visitors. Mail is always a welcomed way for families and friends to be a part of the youth's week. Please send mail to camp with the group leader.

CCC CLOTHING SUGGESTIONS

IN CAMP

- **Shorts/Pants** You may wear either shorts or pants while in camp (though sometimes you might need long pants in the evenings!). Shorts should be visible.
- **Shirts:** Shirts are to be worn at all times. Shirts with beer, liquor, sexual innuendos, or other possibly offensive subject matter are also not permitted. Please have respect for other participants and staff. Make sure to bring a long-sleeve shirt or two and possibly a lightweight jacket, for those cooler evenings.
- **Shoes:** Shoes must be worn at all times in camp for safety reasons. Any type of shoes are acceptable back at homebase, but we always recommend bringing some that you don't mind getting dirty!
- **Bathing Suits:** There is access to a swimming pool and creek area at Christmount. You can wear any type of swimwear.

IN THE COMMUNITY

- **Shorts/Pants:** Any type of shorts or pants is acceptable on most days. They must be visible and worn in a way that does not show any underwear. Jeans or long pants will be required for days of service projects. We recommend you bring at least two pairs of long sturdy work pants in case we are able to assist on a construction project with a partnering ministry and for the day of the Path of Awareness.
- **Shirts:** All participants must wear shirts at all times on worksites and out in the community, for safety and out of respect for the folks we work for and for other participants. Short sleeve shirts are recommended. Shirts with beer, liquor, sexual innuendos, or other possibly offensive subject matter are prohibited.
- **Shoes:** For safety reasons, closed toe shoes must be worn at all times out in the community. Tennis shoes are best. Open-toed shoes and open-heeled shoes (sandals, flip-flops, clogs, crocs, etc.) may be allowed outside of the HOMEBASE. We want all participants to be ready and flexible in all situations. Staff will inform you of each day's activities and what is appropriate clothing for the day's activities. Come prepared!

ASHEVILLE PROGRAM

CCC CLOTHING SUGGESTIONS

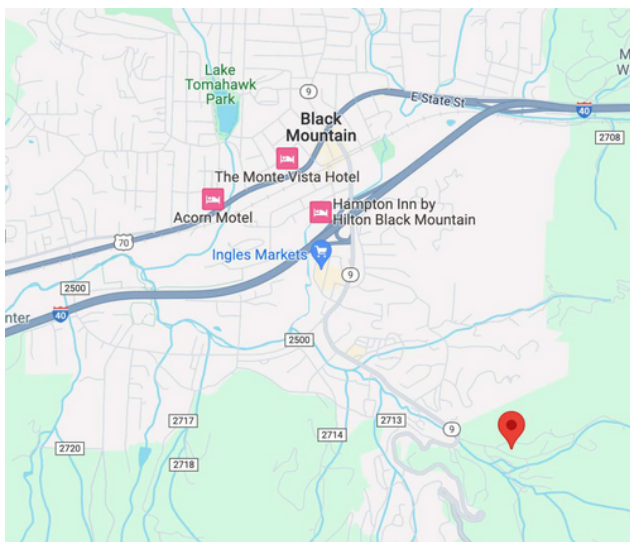
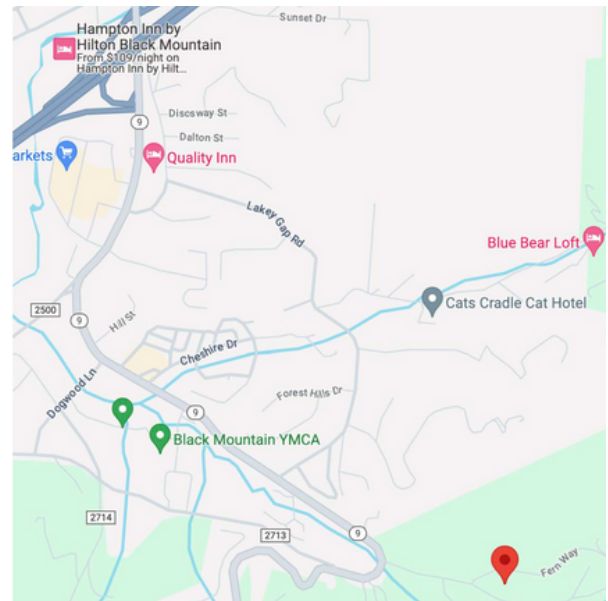
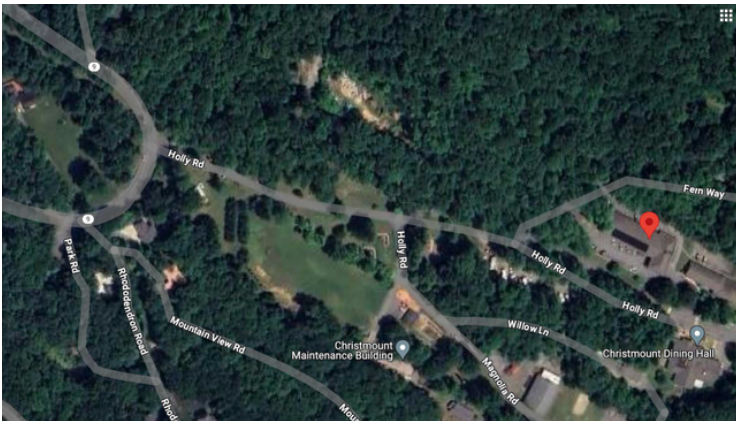
PLAIN IS GOOD! Make sure to pack clothes that could possibly be ruined by paint and other materials!

It's ok to BE PLAIN! Remember what you are in Asheville to do: build community and make a difference. Be modest in your clothing, shoe and jewelry choices. Plain is good.

ASHEVILLE PROGRAM

HOMEBASE – Christmount, Black Mountain, NC

Christmount in Black Mountain, NC will serve as our home base. It is located at 222 Fern Way Black Mountain, NC 28711. Christmount will be our sleeping, eating, worshiping, and general headquarters for the week. This is where your group will come on Monday to start the journey.



Please make sure to arrive on Monday at Christmount
222 Fern Way Black Mountain, NC 28711.
Not 297 Haywood Street Asheville, NC 28801.

MEDICAL INFORMATION

SAFETY FIRST!

We strongly emphasize safety in the community and in camp. Our staff people will be with you the majority of each day and every evening. We never anticipate having accidents, but rest assured we are prepared to handle them. All CCC staff members are trained and certified in First Aid and CPR. We strongly recommend each participant have an up-to-date tetanus shot.

ACTIVITY PERMISSION & MEDICAL CONSENT FORM

Carolina Cross Connection requires all its participants (students and adults) to complete an Activity Permission and Medical Consent Form before we allow them to participate in any camp activities. **Of course, adults do not need parental consent, but they still need to fill out a form.** The most critical part of these forms is the participant's insurance information.

INSURANCE COVERAGE FOR CCC PARTICIPANTS IS AS FOLLOWS:

1. PRIMARY Insurance Carrier:

The Participant's Insurance — Your insurance information MUST be provided on the Activity Permission and Medical Consent Form. Should an accident occur, in or out of camp, the camper's family insurance will be the primary carrier. In other words, during the initial visit to the hospital, the camper's insurance will be given to hospital personnel. If possible, everyone should carry their personal insurance card.

2. SECONDARY Insurance Carrier:

Each participant at Carolina Cross Connection is also covered under our insurance policy and a policy at the camp location they attend. Should an accident occur in-camp, on a worksite, or in transit to or from a worksite, CCC's insurance covers any costs not covered by the primary carrier (your insurance policy). Most of the camp locations we use also have insurance coverage that work similarly to ours, picking up any costs not covered by the primary carrier.

3. The participant and their family must pay any medical costs not covered by this participant's, CCC's, or camp insurance.

MEDICAL INFORMATION

IN THE EVENT OF AN ACCIDENT OR MEDICAL EMERGENCY

1. We will take the injured person to the hospital or, if need be, call for an ambulance. Whenever possible, we ensure that the victim is accompanied by at least two people: a CCC staff member and an adult from that person's church. If the emergency occurs on a worksite, the entire work team will accompany the victim to the hospital.
2. We will contact parents/guardians as soon as possible. If parents/guardians are not available, we will contact an emergency contact person, as listed on the Activity Permission, and Medical Consent Form.
3. We will give the insurance information of the injured person to hospital personnel to file the initial claim.
4. Following the camp week, we will send parents/guardians the proper claim form and the information needed to complete that form.
5. Parents/guardians will complete the form entirely.
6. Parents/guardians will attach itemized bills showing the patient's name, diagnosed condition, treatment date (s), nature of treatment, and charge per treatment. Statements from the primary carrier showing payment or rejection of the claim should also be included. If there is no coverage other than CCC insurance, a written statement from the parents/guardian's employer(s) verifying no coverage must be provided.

IN THE EVENT OF A SERIOUS ILLNESS

Our staff will keep that person in camp to supervise them, attend to their needs, and help them to feel comfortable. If their condition becomes serious and needs medical attention, we will follow the same steps as above. Depending on the seriousness of the illness, the sick person may have to return home for the sake of their health and the health of other participants.

ASHEVILLE PROGRAM

Safety, First Aid & Mental Health

PLEASE NOTE THAT YOU ARE RESPONSIBLE FOR RELAYING THIS INFORMATION TO YOUR STUDENTS AND ADULTS.

THE BUDDY SYSTEM – WE ARE SERIOUS ABOUT IT!

Asheville is a big city and you will be spending the week in the heart of downtown. Like most urban settings, there are people who live, work and shop, there are visiting tourists, and there are people passing through. There are stop lights, street signs, street vendors, and shops...All vying for attention. It is easy to get distracted in the big city. At CCC we spend most of our time in this exciting environment and every moment of the day and evening has a purpose. We ask that you stay focused on the purpose of the activity--whether it is serving water and ice cream in the park or free time with your small group to grab an ice cream cone. There will be designated time for some shopping and exploring but only when designated. Both adults and students should always be in groups of three or with the group at all times when out in the community serving or with a partnering organization. Always! If ever in doubt as to where you are to be and with whom, ask a staff member or adult. Wandering off will not be tolerated and anyone violating this rule will be sent home. Adults should always know where students are at all times and students are responsible for communicating with staff and adults

More specific safety information will be given during orientation in Asheville on Sunday as you begin your week, but the understanding of the buddy rule is primary to everyone having a focused, fun and safe week of missions in Asheville.

ASHEVILLE PROGRAM

MENTAL HEALTH

PLEASE NOTE THAT YOU ARE RESPONSIBLE FOR RELAYING THIS INFORMATION TO YOUR STUDENTS AND ADULTS.

According to the National Alliance to End Homelessness, over 640,000 people experience homelessness on any given night in the U.S. About 26% of homeless adults suffered from some form of mental illness and about 62,000 or 13% of all homeless persons are veterans. Veterans are a specific demographic when it comes to homelessness and often experience homelessness because of disabilities caused by their experience on the battlefield. Physical injuries, post-traumatic stress and mental suffering are just a few of the wartime after effects that drive the population of homeless veterans. In Buncombe County (where we will be serving), it is estimated that 38% of the homeless are veterans.

Adults and students may or may not have any experience with people dealing with the stress of homelessness and/or mental illness. Having conversations and making friends with veterans and those with mental health experiences is an important part of CCC Urban mission and ministry all summer long. Your group will go through orientation on Sunday of your camp week with our staff and with the staff at our partnering organizations. Any extreme situations are usually handled by those staff at partnering organizations.

THINGS TO CONSIDER

PLEASE NOTE THAT YOU ARE RESPONSIBLE FOR RELAYING THIS INFORMATION TO YOUR STUDENTS AND ADULTS.

People First Language:

- Places the importance of a person's identity on their humanity and not circumstances or conditions.
- Eliminates stigmas/stereotypes/judgments certain words might create.
- Creates a foundation for an environment that supports ministry WITH one another.

Examples of People First Language

- Person experiencing homelessness or has experienced homelessness
- Neighbor
- Person with an addiction
- Person with mental health experiences

Developing a personal understanding and belief on:

- Housing first or Housing last
- Harm Reduction programs
- Abundance or wastefulness
- How are services being provided and why?

Haywood Street Congregation

- Downtown Welcome Table
- Respite
- Gardens
- Worship
- Fresco

ASHEVILLE PROGRAM

RELEASE OF RIGHTS

We live in a world that is full of rights. Our particular culture is one where we take pride in our rights. As a matter of fact, the rights of individuals are constitutional but as we see the demanding of individual rights increase, we see much of the moral fiber of our society decrease. Jesus laid down rights and all glory, to the heavens, to become a human and to serve, not to be served. (Phil 2:5-11 and Mark 10:45)

We ask you to consider laying down your rights this week. Not to lay them down for better or for worse, but to entrust them to God or transfer the responsibility of them to a place of safekeeping. These rights may seem unreasonable but in a week of relational ministry could cause dissension. Would you take time to search your heart and willingness to surrender your rights to God? (Romans 12:1)

CAROLINA CROSS CONNECTION

ASHEVILLE PROGRAM

RELEASE OF RIGHTS

I GIVE UP MY RIGHT TO	I ENTRUST TO GOD
A comfortable bed	My strength and endurance
Dressing fashionably	My security in God
Seeing results	God's purpose and fruit in God's timing
Control of others	God's workmanship in others
Control of circumstances	My circumstances to God's purpose in making me Christ-like
Having pleasant circumstances	The privilege of suffering for God's sake
Making decisions	God's sovereign hand in my life
Taking up offense	My deepest needs
Being succesful	My security in God's love
Being understood	My reputation
Being heard	My need for recognition
Being right	My need for God's righteousness

ASHEVILLE PROGRAM

RELEASE OF RIGHTS

Which "right" do you give up for the week which will allow God to step in and provide in a new and exciting way? List three!

Which one will be the hardest for you?

How do you think giving these things up will help you have a better experience at CCC?

4 TYPES OF GUESTS

We are guests visiting new communities. We don't have all of the answers to perceived problems we might notice, we are not better than anyone we meet, we are guests entering a new space. What type of guest are you? If you are in one of the first three categories, what is it going to take to get you to the fourth?

INSULATED	INTERESTED	INVOLVED	INTEGRATED
Stays by self/group	Only interacting with very few	Open and friendly to all	Having conversations where they share openly and listen well
Laughs at differences	Polite in new situations; Is sensitive	Asks good questions	Ask good questions and seeks to fully understand the situation
Hangs out close to leaders and uses hand sanitizer often	Will learn names and take pictures	Learns about the lives of our hosts and is in the middle of whatever we are doing	Dirt all over at end of day from working; Has deep conversations; Prays with those hurting
Does devotions but never shares	Does devotions and shares thoughts	Participates in group discussions and seeks to add value to talks; prays for teammates and new friends	Begins to ask questions not posed in devotions; seeks to see what God may want them to see in the everyday interactions

4 TYPES OF GUEST

Based on your past experiences, what type of guest have you been? Is it easier to be an Insulated guest or an Integrated guest?

What are some ways you can push yourself each day to go from insulated to integrated?

How do you think each of these 4 types of guests make the people we're working for feel?

Consider the commitment below and what it means to be a part of this mission team! COMMITMENT:

I give God permission to do anything God's wishes to me, with me, in me, or through me that would glorify God. I am also committing to faithfully participate on a CCC team. I understand that requirements of serving on this team will be to help with team development and preparation for departure. This will involve completing the requested Bible Study, raising costs or personal expenses, and other activities. I also understand that throughout the time of our camp, I will be supportive of leadership and other team members, assume the best about others, remain flexible and be a blessing.

SUMMER 2024

ASHEVILLE WEEK WALK-TROUGH

Monday

11:00 am - 12:00 pm : Arrive at Christmount
Christian Assembly

12:00 pm : Lunch

12:30 pm : Orientation

1:00 pm : Introduction to Conversations

- Learn tips for starting conversations and why we are spending a week in Asheville together
- Discuss fears, concerns, and the importance of building relationships

2:30 pm : Ice Cream Social

- Why ice cream? It is a luxury item. Helps break barriers and start conversations. It is an opportunity to provide choices which are an important aspect of life.

4:30 pm - 5:00 pm : Free Time

- Option to be in downtown Asheville, at Christmount, or group leader's choice
- If out of camp, it must be a group of three participants with a minimum of one adult.

5:30 pm : Adult meeting

6:00 : Dinner

7:00 pm : Reflection

7:30 pm : Small Group

8:00 pm : Self Care Practice

9:00 pm : Quiet Time

10:00 pm : Lights Out

Tuesday

7:00 am : Wake Up

7:30 am : Breakfast

8:00 am : Spiritual Practice

9:00 am : Path of Awareness

- The Path of Awareness helps us learn about the services provided by organizations in downtown Asheville, NC for our neighbors without secure housing. We discuss the challenges our neighbors without housing face daily and dismantle stereotypes often held against marginalized communities.

12:00 pm : Lunch

1:00 pm : Path of Awareness

4:00 pm : Free Time

6:00 pm : Dinner

7:00 pm : Learning about our Communities

- Reflect on an organization you learned about during the path of awareness and research our own neighborhoods to learn about similar organizations and how to get involved back home.

8:00 pm : Self Care Practice

9:00 pm : Quiet Time

9:30 pm : Lights Out

SUMMER 2024

ASHEVILLE WEEK WALK-TROUGH

Wednesday

7:30 am : Wake Up
8:00 am : Breakfast
8:30 am : Spiritual Practice
9:30 am : Haywood Street Congregation

- Downtown Welcome Table
- Worship

3:00 pm : Debrief
3:30 pm : Free Time
6:00 pm : Dinner
7:00 pm : Theirs is the Kingdom
8:30 pm : Self Care Practice
9:00 pm : Quiet Time
9:30 pm : Lights Out

Thursday

7:00 am : Wake Up
7:30 am : Breakfast
8:00 am : Spiritual Practice
9:00 am : Service Projects/Embodied
Activities 12:00 pm : Lunch
1:00 pm : Continued Service Projects/
Educational Activity
6:00 pm : Community CookOut and Softball
Game
9:00 pm : Quiet Time
9:30 pm : Lights Out

Friday

7:00 am : Wake Up
7:30 am : Breakfast
8:00 am : Spiritual Practice
9:00 am : Christmount Hike with Haywood
Street Friends
12:00 pm : Lunch
1:00 pm : Depart

SUMMER THEME 2024

CULTIVATE

CURIOSITY, COMMUNITY & SERVICE

SUNDAY

SCRIPTURE: MATTHEW 13:1-2; 10-17

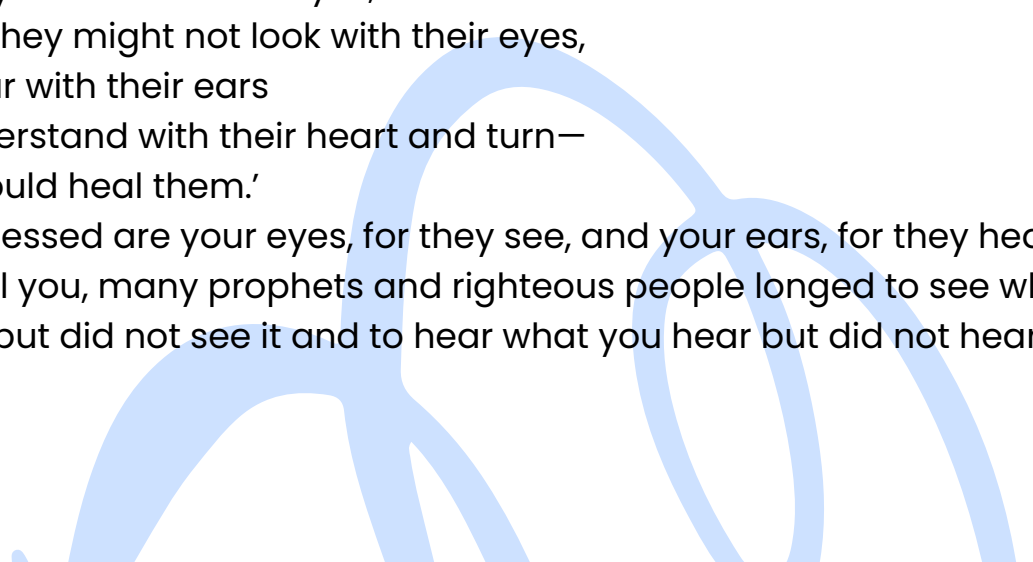
1 That same day Jesus went out of the house and sat beside the sea. 2 Such great crowds gathered around him that he got into a boat and sat there, while the whole crowd stood on the beach.

10 Then the disciples came and asked him, "Why do you speak to them in parables?" 11 He answered, "To you it has been given to know the secrets [b] of the kingdom of heaven, but to them it has not been given. 12 For to those who have, more will be given, and they will have an abundance, but from those who have nothing, even what they have will be taken away. 13 The reason I speak to them in parables is that 'seeing they do not perceive, and hearing they do not listen, nor do they understand.' 14 With them indeed is fulfilled the prophecy of Isaiah that says:

'You will indeed listen but never understand,
and you will indeed look but never perceive.

15 For this people's heart has grown dull,
and their ears are hard of hearing,
and they have shut their eyes,
so that they might not look with their eyes,
and hear with their ears
and understand with their heart and turn—
and I would heal them.'

16 "But blessed are your eyes, for they see, and your ears, for they hear. 17 Truly I tell you, many prophets and righteous people longed to see what you see but did not see it and to hear what you hear but did not hear it.



SUMMER THEME 2024

CULTIVATE

CURIOSITY, COMMUNITY & SERVICE

MONDAY

Main Idea:

This week at CCC is for everyone. We are using this passage to illustrate that Jesus did not have barriers. His message was for everyone. He did not check their identity on the seaside. He just got in a boat, rowed out a little ways so people could hear him. And he gave everyone the same opportunity.

Small Group Questions:

Ice Breaker: If you could only eat one food for the rest of your life, what would it be and why?

1. Why do you think Jesus used a parable to explain his message? How does this relate to making his teachings accessible to everyone?
2. In what ways might the accessibility of Jesus' message in the parable of the sower impact how people from different backgrounds understand and connect with it?
3. How can we ensure that everyone, regardless of their circumstances or abilities, has the opportunity to hear and understand the message of Jesus?
4. Why is it important for us to think about accessibility when sharing stories or lessons from the Bible with others? How can we make sure that everyone feels included and able to participate in our discussions and activities?

SUMMER THEME 2024

CULTIVATE

CURIOSITY, COMMUNITY & SERVICE

TUESDAY

SCRIPTURE: MATTHEW 13:3

3 And he told them many things in parables, saying: "Listen! A sower went out to sow.

Main Idea:

Jesus wants everyone to have the opportunity to hear. It is not forced and everyone has equal opportunity to hear and receive.

Small Group Questions:

Ice Breaker. What's something you're really passionate about and why does it interest you?

1. What do you know about seeds and plants?
2. How do you think we can cultivate a community where people feel supported and encouraged in their spiritual growth, regardless of where they are on their journey?
3. What are some ways we can nurture the seeds of faith in ourselves and others, even in challenging or less-than-ideal circumstances?
4. How can we ensure that our faith community remains inclusive of everyone, particularly those who may feel marginalized or overlooked?

SUMMER THEME 2024

CULTIVATE

CURIOSITY, COMMUNITY & SERVICE

WEDNESDAY

SCRIPTURE: MATTHEW 13:4-6, 19-21

4 And as he sowed, some seeds fell on a path, and the birds came and ate them up. 5 Other seeds fell on rocky ground, where they did not have much soil, and they sprang up quickly, since they had no depth of soil. 6 But when the sun rose, they were scorched, and since they had no root, they withered away.

19 When anyone hears the word of the kingdom and does not understand it, the evil one comes and snatches away what is sown in the heart; this is what was sown on the path. 20 As for what was sown on rocky ground, this is the one who hears the word and immediately receives it with joy, 21 yet such a person has no root but endures only for a while, and when trouble or persecution arises on account of the word, that person immediately falls away.

Main Idea:

Even when we don't want to absorb the love Jesus offers, he offers it anyway. Rocky soil isn't turned off to love, it just doesn't allow love to root in and change their behavior.

SUMMER THEME 2024

CULTIVATE

CURIOSITY, COMMUNITY & SERVICE

WEDNESDAY

SMALL GROUP QUESTIONS:

ICE BREAKER: IF YOU COULD HAVE ANY SUPERPOWER, BUT IT HAD TO BE A BIT SILLY, WHAT WOULD IT BE?

1. HOW WOULD YOU EXPLAIN THE TYPE OF SOIL/DIRT ON A PATH?
2. HAVE YOU EVER FELT THAT WAY WHEN LISTENING TO SOMEONE TALK ABOUT GOD?
3. WHAT DO YOU THINK CAUSES US TO RESPOND LIKE THE PATH SOIL?
4. WHAT ROLE DO YOU THINK EMPATHY AND COMPASSION PLAY IN FOSTERING A WELCOMING ENVIRONMENT FOR EVERYONE, REGARDLESS OF THEIR BACKGROUND?

SUMMER THEME 2024

CULTIVATE

CURIOSITY, COMMUNITY & SERVICE

THURSDAY

SCRIPTURE: MATTHEW 13:7, 22

7 Other seeds fell among thorns, and the thorns grew up and choked them.

22 As for what was sown among thorns, this is the one who hears the word, but the cares of this age and the lure of wealth choke the word, and it yields nothing.

Main Idea:

You have spent almost a week hearing about love, and loving others. Tonight we will take communion. Communion is a community activity. Where collectively we receive the love of God. We have the opportunity for reflection here on who we are and what we want to become. The example is an Open Table where all belong and are accepted. How do we become more like that?

SUMMER THEME 2024

CULTIVATE

CURIOSITY, COMMUNITY & SERVICE

THURSDAY

Small Group Questions:

Ice Breaker: If you were a pizza topping, what topping would you be and why? Bonus points if you can come up with a creative pizza name for yourself!

1. Let's talk about the things in the story that made it hard for the seeds to grow. How do those same things show up in our own lives, and what can we do about them?
2. How can we help each other through the tough times when it feels hard to keep believing in what we know is true?
3. Why is it important to think about how our words and actions might affect someone else's beliefs or journey?
4. How does knowing that God loves and accepts everyone influence the way we treat each other in our group?

SUMMER THEME 2024

CULTIVATE

CURIOSITY, COMMUNITY & SERVICE

FRIDAY

SCRIPTURE: MATTHEW 13:8-9, 23

8 Other seeds fell on good soil and brought forth grain, some a hundredfold, some sixty, some thirty. 9 If you have ears, [a] hear!"

23 But as for what was sown on good soil, this is the one who hears the word and understands it, who indeed bears fruit and yields in one case a hundredfold, in another sixty, and in another thirty."

Main Idea:

Love produces love.

Small Group Questions:

Ice Breaker: What's something you're looking forward to in the future, whether it's a goal you want to achieve or an experience you want to have?

1. Think about the different endings for the seeds in the story. What can we learn from that about how people grow and change spiritually?
2. How can we celebrate the fact that everyone's journey with faith is unique and special?
3. Why is it important to be kind and understanding to everyone, no matter where they come from or who they are?
4. What are some things we can do as a group to make sure that everyone feels like they're important and belong with us?